

**Table 1. Health Insurance Coverage by Source, 2001-2007  
New Jersey**

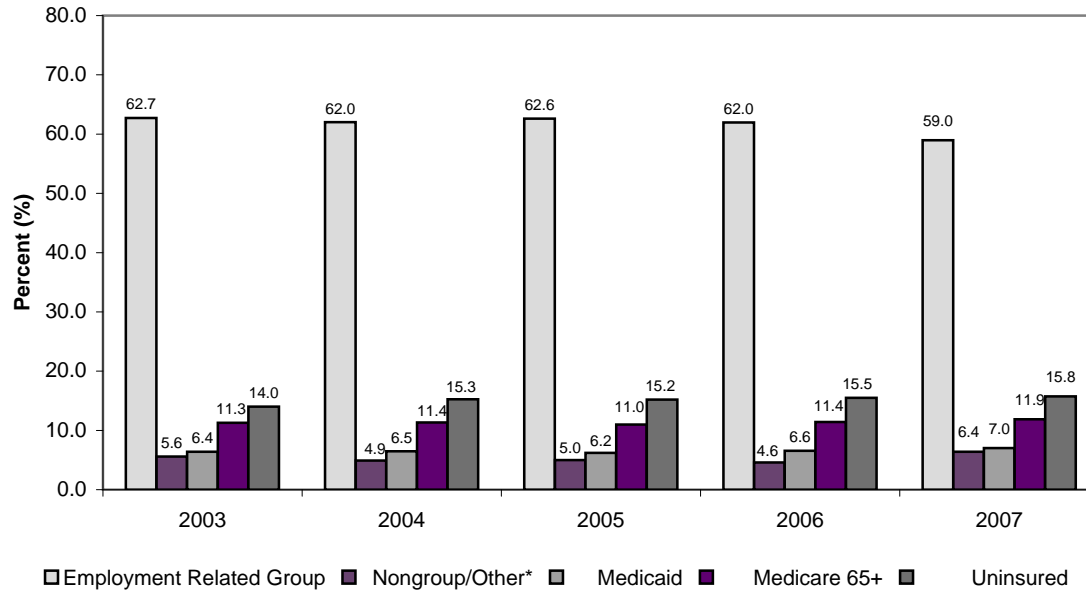
Year	Employment Related Group		Nongroup/Other*		Medicaid		Medicare 65+		Uninsured		Total
	No.	%	No.	%	No.	%	No.	%	No.	%	
<b>2003</b>	5,380,393	62.7	480,149	5.6	549,666	6.4	967,941	11.3	1,200,812	14.0	8,578,961
<b>2004</b>	5,373,120	62.0	426,293	4.9	560,290	6.5	983,211	11.4	1,321,743	15.3	8,664,656
<b>2005</b>	5,455,301	62.6	435,610	5.0	541,092	6.2	956,205	11.0	1,323,779	15.2	8,711,987
<b>2006</b>	5,366,100	62.0	397,221	4.6	566,946	6.6	988,690	11.4	1,341,005	15.5	8,659,962
<b>2007</b>	5,044,212	59.0	547,649	6.4	600,385	7.0	1,015,850	11.9	1,347,641	15.8	8,555,736
<b>2001-2003</b>		62.0		5.0		6.7		12.6		13.7	
<b>2002-2004</b>		62.0		5.1		6.8		11.8		14.4	
<b>2003-2005</b>		62.5		5.2		6.4		11.2		14.8	
<b>2004-2006</b>		62.2		4.8		6.4		11.3		15.3	
<b>2005-2007</b>		61.2		5.3		6.6		11.4		15.5	

\* For persons under age 65, other insurance includes Champus and Medicare. For persons 65 and over, other insurance just includes Champus. Medicare is a separate category for those 65 and over.

Note: Estimates based on weighted data

Source: Current Population Survey: Annual Demographic File, Bureau of the Census

**Figure 1. Percent Health Insurance Coverage By Source,  
New Jersey, 2003-2007**



\* For persons under age 65, other insurance includes Champus and Medicare. For persons 65 and over, other insurance just includes Champus. Medicare is a separate category for those 65 and over.

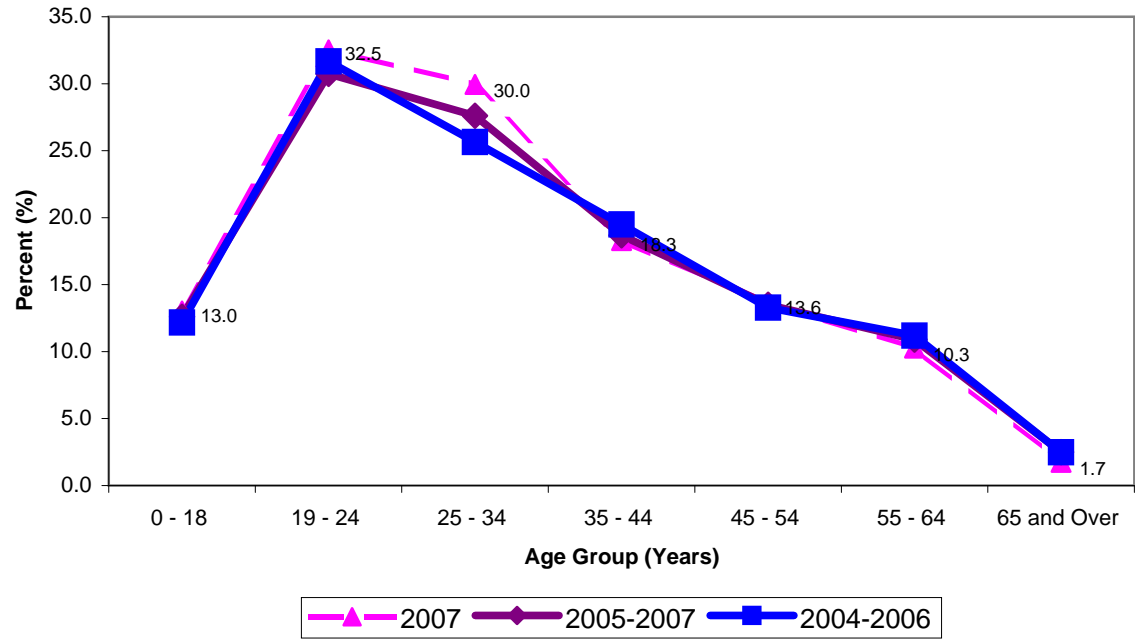
**Table 2. Uninsured by Age  
New Jersey, 2003 - 2007**

Age Group (years)	2006		2007		2003-2005		2004-2006		2005-2007	
	No.	%	No.	%	No.	%	No.	%	No.	%
<b>0 - 18</b>	299274	13.6	288,300	13.0	791,921	11.5	827,066	12.17	846,110	12.6
<b>19 - 24</b>	195377	29.3	209,275	32.5	604,431	32.2	607,156	31.67	600,704	30.7
<b>25 - 34</b>	256396	25.0	329,306	30.0	829,080	25.4	825,747	25.65	899,883	27.6
<b>35 - 44</b>	278518	20.3	225,963	18.3	716,752	17.3	807,584	19.5	740,748	18.7
<b>45 - 54</b>	192001	14.1	178,278	13.6	494,155	12.5	531,749	13.28	540,592	13.5
<b>55 - 64</b>	88161	9.6	97,401	10.3	351,688	13.0	307,015	11.19	300,849	10.9
<b>65 and Over</b>	31279	2.8	19,117	1.7	58,307	1.8	80,211	2.49	83,538	2.5
<b>Total</b>	1341005	15.5	1,347,641	15.8	3,846,334	14.8	3,986,528	15.31	4,012,425	15.5

*Note: Estimates based on weighted data*

*Source: Current Population Survey: Annual Demographic File, Bureau of the Census*

Figure 2. Percent Uninsured by Age, New Jersey, (average) 2005-2007



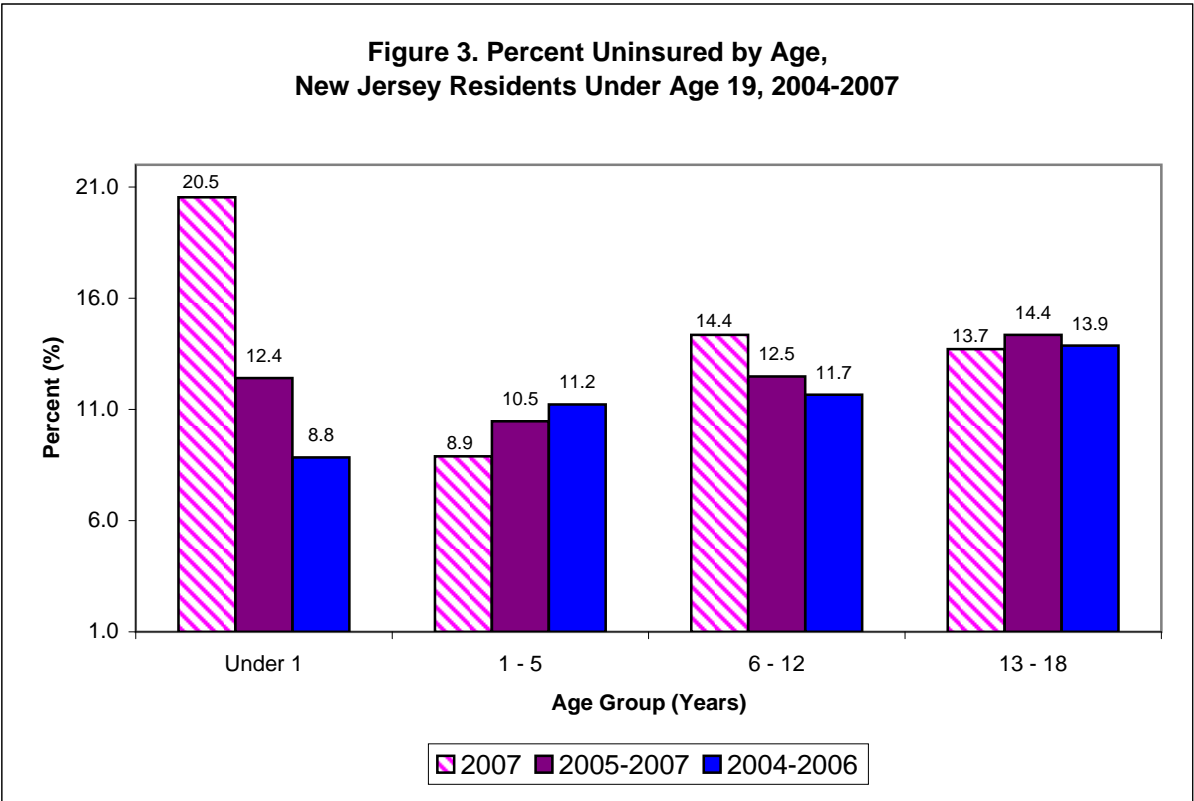
**Table 3. Health Insurance Coverage by Age, 2003-2007  
New Jersey Residents Under Age 19**

<b>Age Group (years)</b>	<b>2006</b>		<b>2007</b>		<b>2003-2005</b>	<b>2004-2006</b>	<b>2005-2007</b>
	<b>Uninsured</b>		<b>Uninsured</b>		<b>Uninsured</b>	<b>Uninsured</b>	<b>Uninsured</b>
	<b>No.</b>	<b>%</b>	<b>No.</b>	<b>%</b>	<b>%</b>	<b>%</b>	<b>%</b>
<b>Under 1</b>	12,588	10.9	21,247	20.5	8.9	8.8	12.4
<b>1 - 5</b>	72,588	12.9	49,740	8.9	10.9	11.2	10.5
<b>6 - 12</b>	102,486	12.9	111,848	14.4	10.3	11.7	12.5
<b>13 - 18</b>	111,612	15.1	105,466	13.7	13.7	13.9	14.4
<b>Total</b>	299,274	13.6	288,300	13.0	11.5	12.2	12.6

*Note: Estimates based on weighted data*

*Source: Current Population Survey: Annual Demographic File, Bureau of the Census*

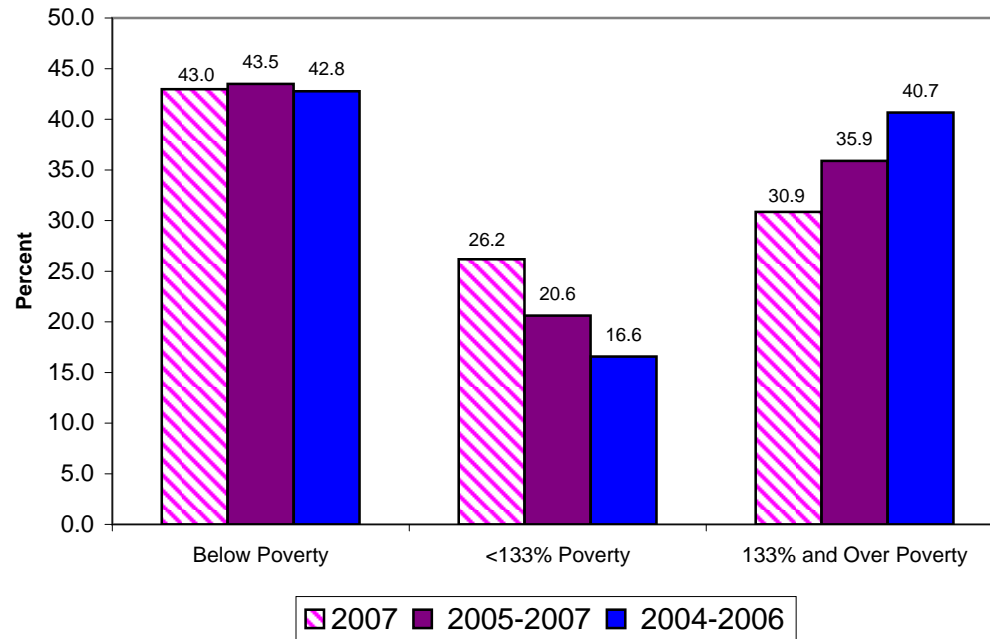
**Figure 3. Percent Uninsured by Age,  
New Jersey Residents Under Age 19, 2004-2007**



**Table 4. Characteristics of PCHIP/Medicaid enrollees, New Jersey Residents Under Age 19, 2004-2007**

	<b>2006</b>	<b>2007</b>	<b>2004-2006</b>	<b>2005-2007</b>
	<b>PCHIP/Medicaid</b>	<b>PCHIP/Medicaid</b>	<b>PCHIP/Medicaid</b>	<b>PCHIP/Medicaid</b>
<b>Percent of Population (%)</b>	15.3	13.6	13.9	14.2
<b>Estimated Enrollment (N)</b>	336,755	301,099	944,370	952,278
<b>Age (%)</b>				
<1	9.8	2.2	7.2	5.9
1-5	31.4	28.8	31.2	30.1
6-12	32.9	36.5	32.2	34.6
13-18	26.0	32.6	29.5	29.3
<b>Race/Ethnicity (%)</b>				
White	26.1	24.0	24.4	24.3
Black	24.5	24.5	29.1	26.5
Hispanic	46.6	42.7	43.4	45.0
Asian	0.9	5.0	2.5	2.4
<b>Ratio of Income to FPL* (%)</b>				
Below Poverty	44.6	43.0	42.8	43.5
<133% Poverty	18.8	26.2	16.6	20.6
133% and Over Poverty	36.5	30.9	40.7	35.9
*Federal Poverty Level				
Note: Estimates based on weighted data				
Source: Current Population Survey: Annual Demographic File, 2003-2007, Bureau of the Census				

**Figure 4. PCHIP and Medicaid Enrollees, by poverty level  
New Jersey Population Under Age 19, 2005-2007**



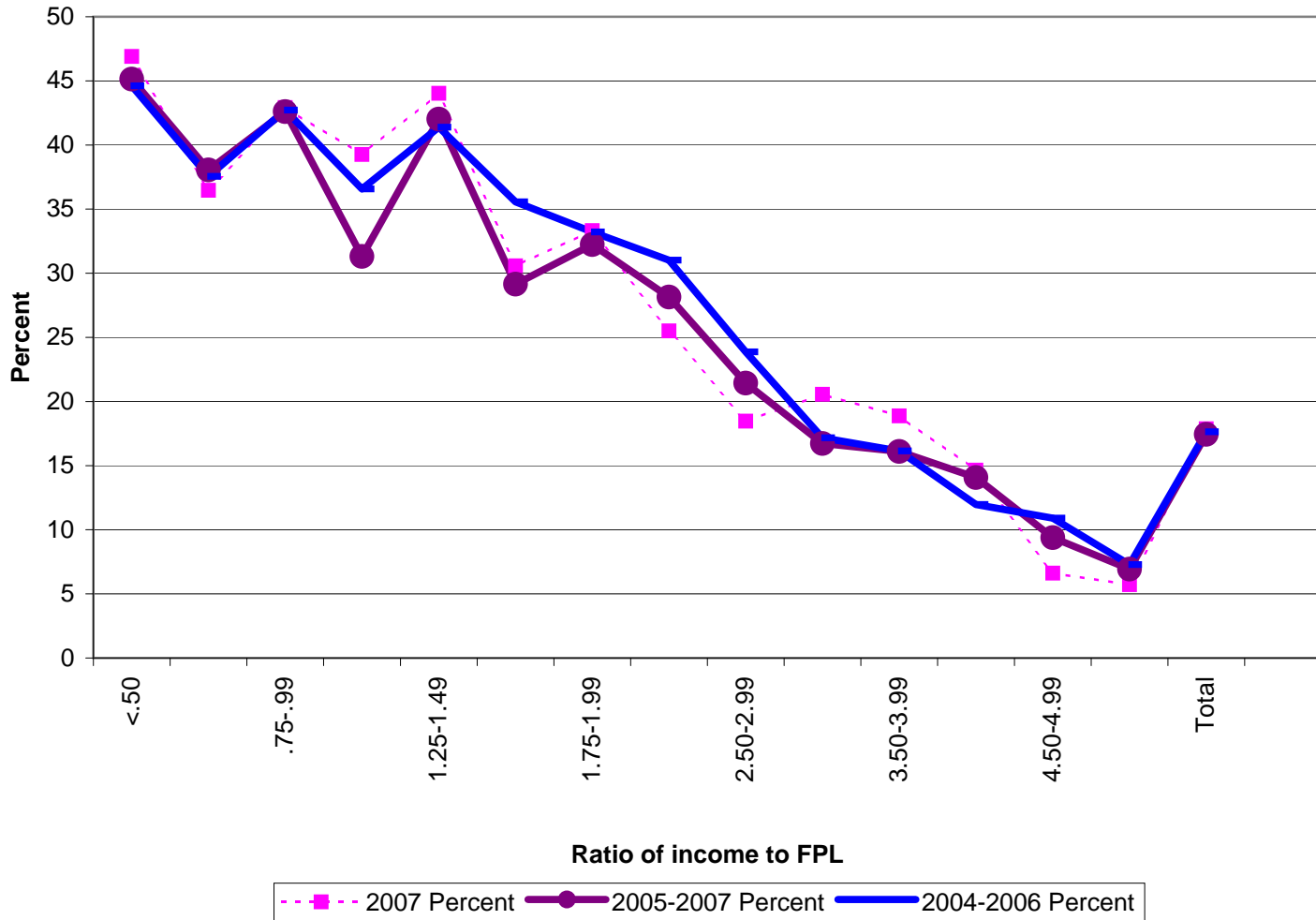
**Table 5. Percent Uninsured by Ratio of Family Income to Federal Poverty Level (FPL)  
New Jersey Population Under Age 65, 2004-2007**

Ratio of income to FPL	2007		2006		2005-2007		2004-2006	
	n	Percent	n	Percent	n	Percent	n	Percent
<.50	107,494	46.9	92,154	57.8	422719	45.14	336,433	44.6
.50-.74	37,559	36.46	64,378	51.9	191891	38.06	154,528	37.6
.75-.99	80,778	42.92	67,528	50.4	244323	42.6	207,277	42.7
1.00-1.24	55,842	39.26	53,996	38.3	235178	31.31	206,451	36.6
1.25-1.49	69,844	44.03	52,333	49.7	223309	42.02	187,332	41.4
1.50-1.74	75,260	30.57	34,274	30.4	190843	29.15	226,265	35.6
1.75-1.99	94,854	33.32	58,035	36.4	248414	32.23	224,685	33.2
2.00-2.49	155,115	25.5	112,370	33.3	462754	28.14	427,929	31.0
2.50-2.99	125,710	18.47	81,327	26.8	312983	21.43	313,611	23.9
3.00-3.49	61,389	20.56	71,352	21.5	220440	16.72	218,105	17.2
3.50-3.99	52,312	18.88	62,462	23.3	214363	16.11	194,772	16.1
4.00-4.49	58,636	14.65	41,105	14.1	167781	14.07	132,282	12.0
4.50-4.99	55,307	6.62	33,701	9.9	114215	9.38	135,829	10.9
5.00 and over	260,536	5.71	185,436	7.3	659487	6.93	641,541	7.3
<b>Total</b>	<b>1,290,637</b>	<b>17.87</b>	<b>1,010,452</b>	<b>18.9</b>	<b>3908699</b>	<b>17.44</b>	<b>3,607,042</b>	<b>17.6</b>

*Note: Estimates based on weighted data*

*Source: Current Population Survey: Annual Demographic File, Bureau of the Census*

**Figure 5. Percent uninsured by ratio of family income to federal poverty level, New Jersey population under 65, 2005-2007**



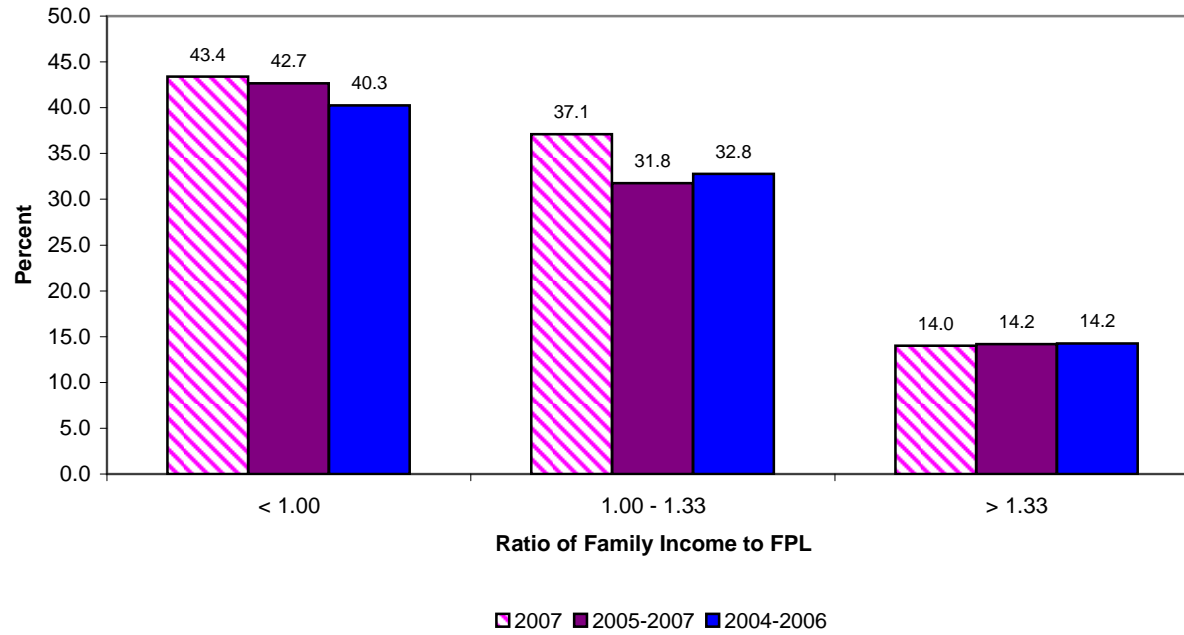
**Table 6. Percent Uninsured by Ratio of Family Income to Federal Poverty Level (FPL)  
New Jersey Population Under Age 65, 2003-2007**

Ratio of Family Income to FPL	2007		2006		2005-2007		2004-2006	
	No.	%	No.	%	No.	%	No.	%
< 1.00	299,427	43.4	333,674	47.1	858,933	42.7	806,296	40.3
1.00 - 1.33	131,556	37.1	69,336	24.7	281,571	31.8	265,851	32.8
> 1.33	888,328	14.0	903,709	14.0	2,768,195	14.2	2,813,018	14.2
<b>Total</b>	<b>1,319,310</b>	<b>17.9</b>	<b>1,306,718</b>	<b>17.5</b>	<b>3,908,699</b>	<b>17.4</b>	<b>3,885,164</b>	<b>17.2</b>

*Note: Estimates based on weighted data*

*Source: Current Population Survey: Annual Demographic File, Bureau of the Census*

**Figure 6. Percent Uninsured by Ratio of Family Income to Federal Poverty Level (FPL),  
New Jersey Residents Under Age 65, 2004-2007**



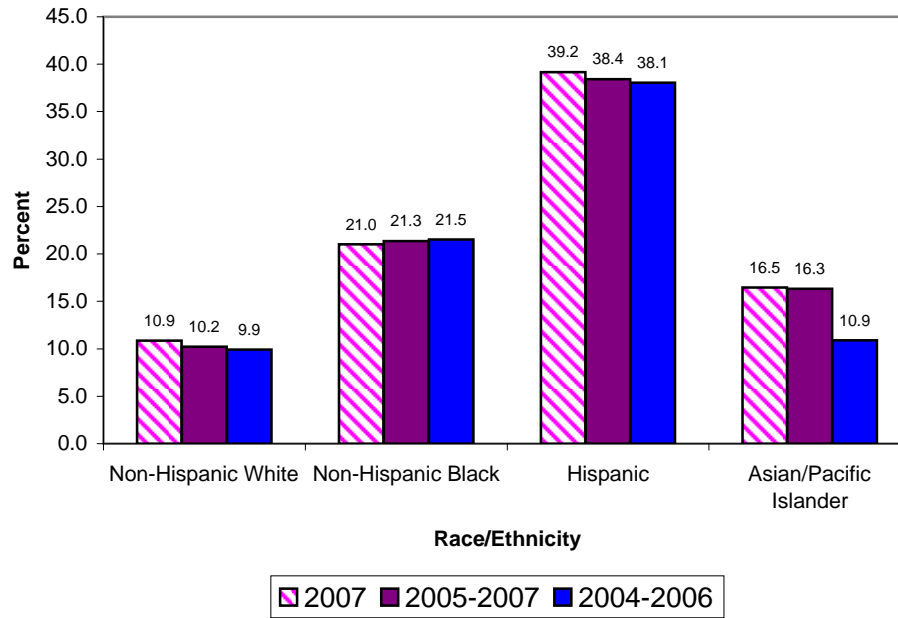
**Table 7. Percent Uninsured by Race and Ethnicity, 2004-2007  
New Jersey Residents Under Age 65**

Race/Ethnicity	2007		2006		2005-2007		2004-2006	
	No.	%	No.	%	No.	%	No.	%
<b>Non-Hispanic White</b>	468,473	10.9	468,444	10.7	1,359,734	10.2	891,261	9.9
<b>Non-Hispanic Black</b>	211,127	21.0	213,485	20.7	651,436	21.3	440,310	21.5
<b>Hispanic</b>	535,556	39.2	526,659	39.9	1,585,097	38.4	1,049,542	38.1
<b>Asian/Pacific Islander</b>	109,691	16.5	97,900	13.3	313,194	16.3	203,504	10.9
<b>Total</b>	1,328,523	17.8	1,309,726	17.3	3,917,404	17.4	2,588,881	17.1

*Note: Estimates based on weighted data*

*Source: Current Population Survey: Annual Demographic File, Bureau of the Census*

**Figure 7. Percent Uninsured by Race and Ethnicity,  
New Jersey Residents Under Age 65, 2004-2007**



**Table 8. Health Insurance Coverage Source, by Race, Ethnicity, and Nativity,  
New Jersey Residents Under Age 65, 2007**

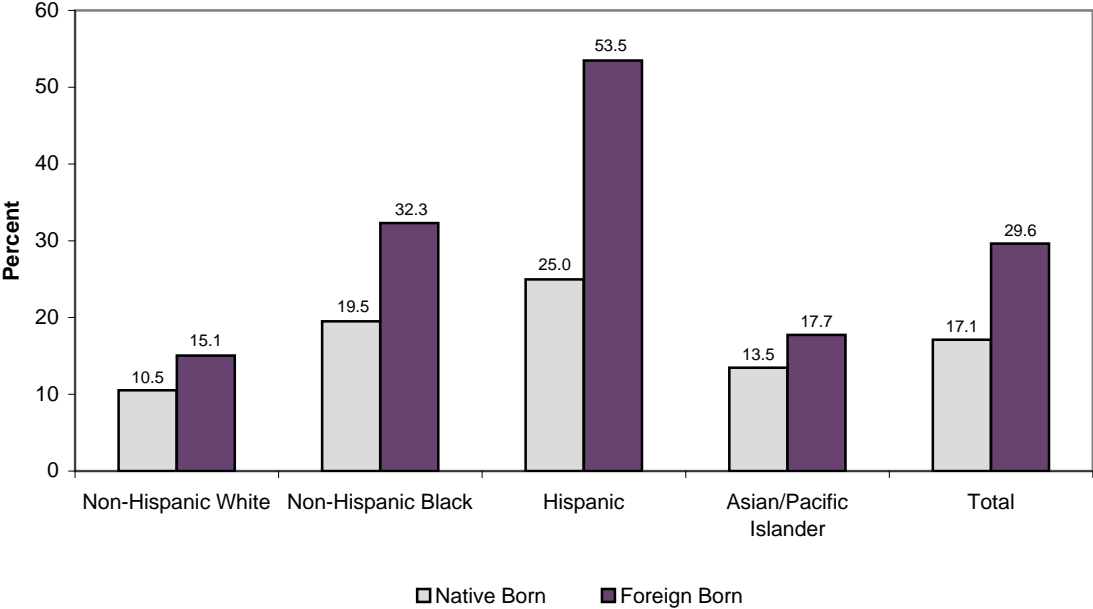
	Employment Related Group		Nongroup/ Other*		Medicaid		Uninsured		Total
	No.	%	No.	%	No.	%	No.	%	
<b>Non-Hispanic White</b>									
Native Born	3,073,776	76.9	322,923	8.1	177,791	4.5	420,548	10.5	3,995,038
Foreign Born	236,545	74.3	30,937	9.7	2,993	0.9	47,924	15.1	318,400
<b>Non-Hispanic Black</b>									
Native Born	522,693	58.9	46,735	5.3	145,022	16.3	173,040	19.5	887,490
Foreign Born	59,605	50.6	11,863	10.1	8,306	7.1	38,086	32.3	117,860
<b>Hispanic</b>									
Native Born	321,281	46.8	35,941	5.2	158,352	23.1	171,521	25.0	687,096
Foreign Born	227,822	33.5	33,859	5.0	54,941	8.1	364,034	53.5	680,657
<b>Asian/Pacific Islander</b>									
Native Born	152,599	75.9	6,104	3.0	15,256	7.6	27,055	13.5	201,014
Foreign Born	325,363	69.8	37,412	8.0	20,497	4.4	82,635	17.7	465,907
<b>Total</b>									
Native Born	4,070,349	64.6	411,703	5.4	496,421	12.9	792,164	17.1	5,770,637
Foreign Born	849,335	57.0	114,071	8.2	86,737	5.1	532,679	29.6	1,582,822

\* For Persons under 65, Other insurance includes Champus and Medicare.

Note: Estimates based on weighted data

Source: Current Population Survey: Annual Demographic File, Bureau of the Census

**Figure 8. Percent Uninsured, by Race, Ethnicity, and Nativity,  
New Jersey Residents Under Age 65, 2007**



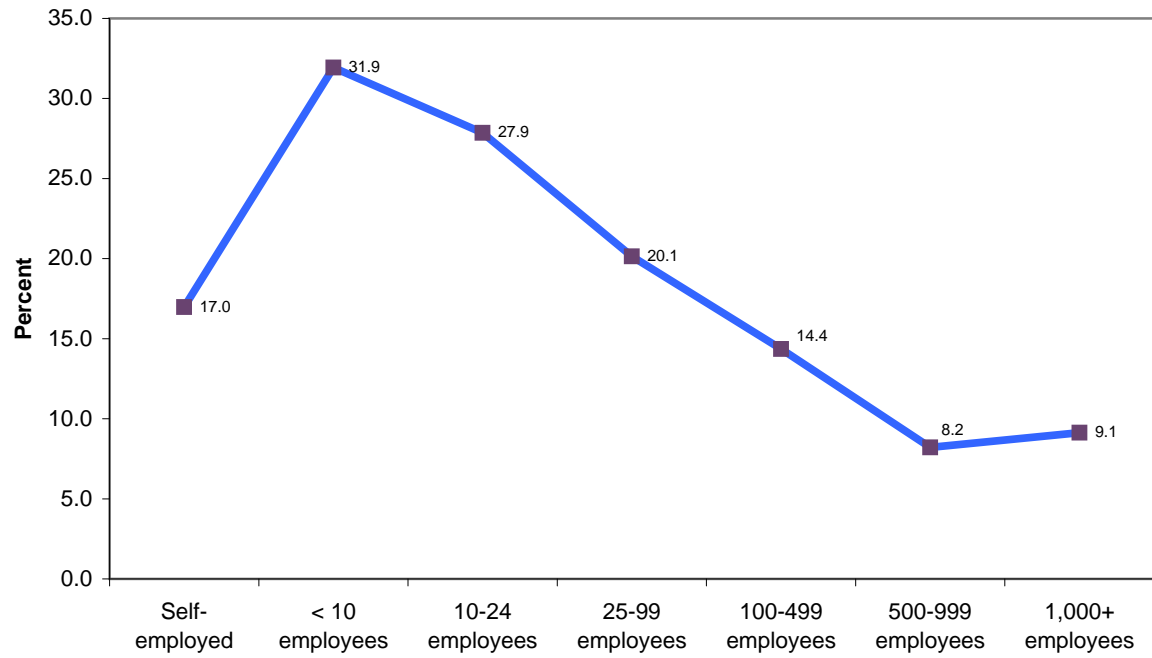
**Table 9. Percent Uninsured by Firm Size, New Jersey  
2004-2007**

Firm Size (Number of Employees)	Uninsured 2007			Uninsured 2006			Uninsured 2005-2007			Uninsured 2004-2006		
	Total	Number	Percent	Total	Number	Percent	Total	Number	Percent	Total	Number	Percent
Self-employed	430,331	67,914	15.8	407,991	67,635	16.6	1,212,479	205,859	17.0	1,189,482	221,123	18.6
< 10 employees	545,274	180,153	33.0	511,129	152,600	29.9	1,670,157	533,266	31.9	1,637,725	531,014	32.4
10-24 employees	454,693	114,675	25.2	476,791	143,069	30.0	1,401,971	390,521	27.9	1,366,874	364,606	26.7
25-99 employees	575,216	118,361	20.6	668,772	134,317	20.1	1,882,725	379,255	20.1	1,857,263	373,076	20.1
100-499 employees	572,921	116,036	20.3	630,636	84,955	13.5	1,839,778	264,135	14.4	1,905,672	235,563	12.4
500-999 employees	267,008	32,762	12.3	1,981,555	60,952	3.1	705,203	57,890	8.2	732,565	62,896	8.6
1,000+ employees	1,666,388	131,898	7.9	2E+06	150,638	8.5	5,259,507	480,274	9.1	5,305,580	528,202	10.0

Note: Estimates based on weighted data

Source: Current Population Survey: Annual Demographic File, Bureau of the Census

**Figure 9. Percent Uninsured by Firm Size, New Jersey, 2005-2007**



**Table 10. Percent Uninsured by Child and Parents' Nativity and Citizenship,  
New Jersey Residents Under 19 Years, 2003-2007**

		<b>2005</b>	<b>2006</b>	<b>2007</b>	<b>2005-2006</b>	<b>2006-2007</b>
<b>Child and Parent are Native Born</b>	n	122,172	172,208	165,016	294,380	337,224
	%	7.4	11.2	11.2	9.2	11.2
<b>Child Native Born, Parent FB Citizen</b>	n	25,535	17,574	17,733	47,097	35,307
	%	11.4	6.6	6.0	8.9	6.3
<b>Child Native Born, Parent FB Non-Citizen</b>	n	56,267	33,938	44,610	90,205	78,547
	%	21.7	14.2	15.6	18.0	14.9
<b>Child and Parent are FB Non-Citizens</b>	n	45,656	22,052	25,045	67,708	47,097
	%	46.6	42.5	49.6	45.2	46.0

*Source: Current Population Survey: Annual Demographic File, Bureau of the Census  
Estimates based on weighted data.*

**Table 11. Percent Uninsured by Ratio of Income to FPL,  
New Jersey Residents Aged 19-64 years, 2003-2007**

Income to FPL		2003	2004	2005	2006	2007	2003-2005	2004-2006	2005-2007
<b>&lt;1.00</b>	n	192,227	197,916	154,702	224,060	154,702	544,845	576,678	533,464
	%	47.3%	46.3%	44.1%	53.7%	44.1%	46.0%	48.0%	47.6%
	<b>Total</b>	406,455	427,317	351,125	417,452	351,125	1,184,897	1,195,894	1,119,702
<b>1.00-1.99</b>	n	224,114	270,571	227,625	198,638	227,625	722,310	696,834	653,888
	%	38.2%	44.2%	40.4%	38.3%	40.4%	41.0%	41.0%	39.7%
	<b>Total</b>	586,404	611,462	563,925	518,370	563,925	1,761,791	1,693,757	1,646,220
<b>2.00+</b>	n	568,211	568,211	649,776	587,753	649,774	1,786,198	1,805,740	1,887,303
	%	13.3%	13.3%	14.6%	13.3%	14.6%	13.7%	13.7%	14.2%
	<b>Total</b>	4,277,030	4,277,030	4,446,543	4,409,285	4,446,540	13,000,603	13,132,858	13,302,368

Note: Estimates based on weighted data

Source: Current Population Survey: Annual Demographic File, Bureau of the Census

**Table 12. Unweighted Frequencies**

<b>Age</b>	<b>2002</b>	<b>2003</b>	<b>2004</b>	<b>2005</b>	<b>2006</b>	<b>2007</b>
< 18 years	1,736	1,747	1,515	1,358	1,371	1,350
19 - 64 years	3,337	3,301	2,855	2,620	2,680	2,697
65+ years	565	510	466	439	466	480
<b>Total</b>	<b>5,638</b>	<b>5,558</b>	<b>4,836</b>	<b>4,417</b>	<b>5,638</b>	<b>5,638</b>
<b>Race/Ethnicity</b>						
Non-Hispanic White	3,574	3,413	3,012	2,526	2,548	2,558
Non-Hispanic Black	696	747	577	554	526	459
Hispanic	949	963	878	982	940	1,001
American Indian	17	12	13	17	17	15
Asian/Pacific Islander	340	375	313	293	442	446
Non-Hispanic Other	13	7	43	45	44	48
<b>Total</b>	<b>5,589</b>	<b>5,517</b>	<b>4,836</b>	<b>4,417</b>	<b>4,517</b>	<b>4,527</b>

*Source: Current Population Survey: Annual Demographic File, Bureau of the Census*