

**Table 1. Health Insurance Coverage by Source, 2000-2005
New Jersey**

Year	Employment Related Group		Nongroup/Other*		Medicaid		Medicare 65+		Uninsured		Total
	No.	%	No.	%	No.	%	No.	%	No.	%	
2000	5,354,666	63.8	442,041	5.3	463,465	5.5	1,111,448	13.2	1,020,992	12.2	8,392,612
2001	5,263,241	62.1	393,863	4.7	536,150	6.3	1,168,242	13.8	1,108,973	13.1	8,470,469
2002	5,271,883	61.3	411,564	4.8	636,890	7.4	1,087,469	12.6	1,196,593	13.9	8,604,399
2003	5,380,393	62.7	480,149	5.6	549,666	6.4	967,941	11.3	1,200,812	14.0	8,578,961
2004	5,373,120	62.0	426,293	4.9	560,290	6.5	983,211	11.4	1,321,743	15.3	8,664,656
2005	5,455,301	62.6	435,610	5.0	541,092	6.2	956,205	11.0	1,323,779	15.2	8,711,987
2000-2002		62.4		4.9		6.4		13.2		13.1	
2001-2003		62.0		5.0		6.7		12.6		13.7	
2002-2004		62.0		5.1		6.8		11.8		14.4	
2003-2005		62.5		5.2		6.4		11.2		14.8	

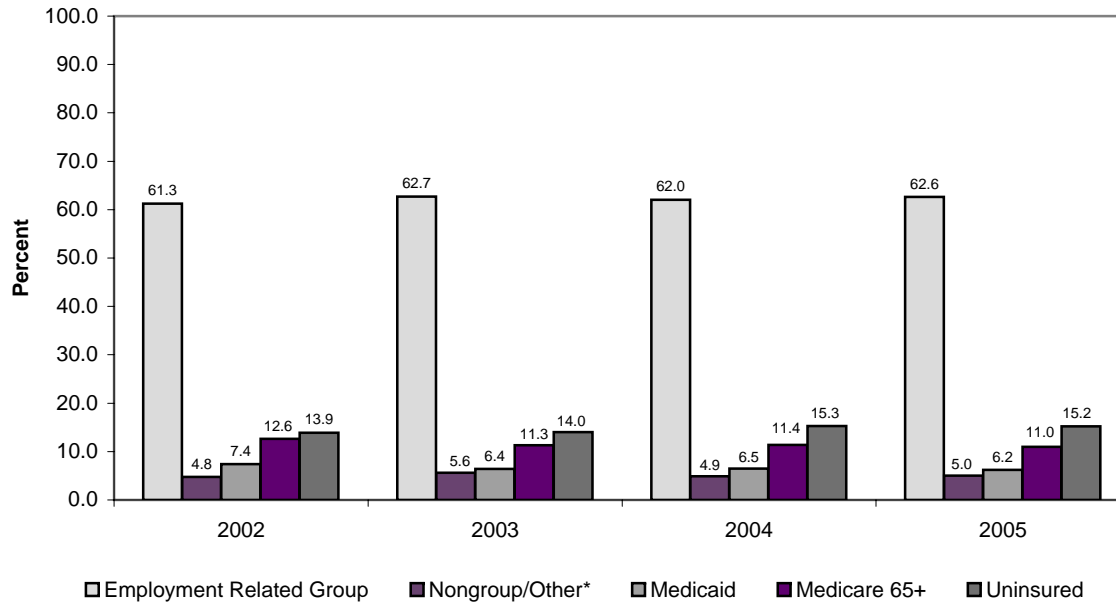
* For persons under age 65, other insurance includes Champus and Medicare. For persons 65 and over, other insurance just includes Champus.

Medicare is a separate category for those 65 and over.

Note: Estimates based on weighted data

Source: Current Population Survey: Annual Demographic File, 2001-6, Bureau of the Census

Figure 1. Percent Health Insurance Coverage By Source, New Jersey, 2002-2005



* For persons under age 65, other insurance includes Champus and Medicare. For persons 65 and over, other insurance just includes Champus. Medicare is a separate category for those 65 and over.

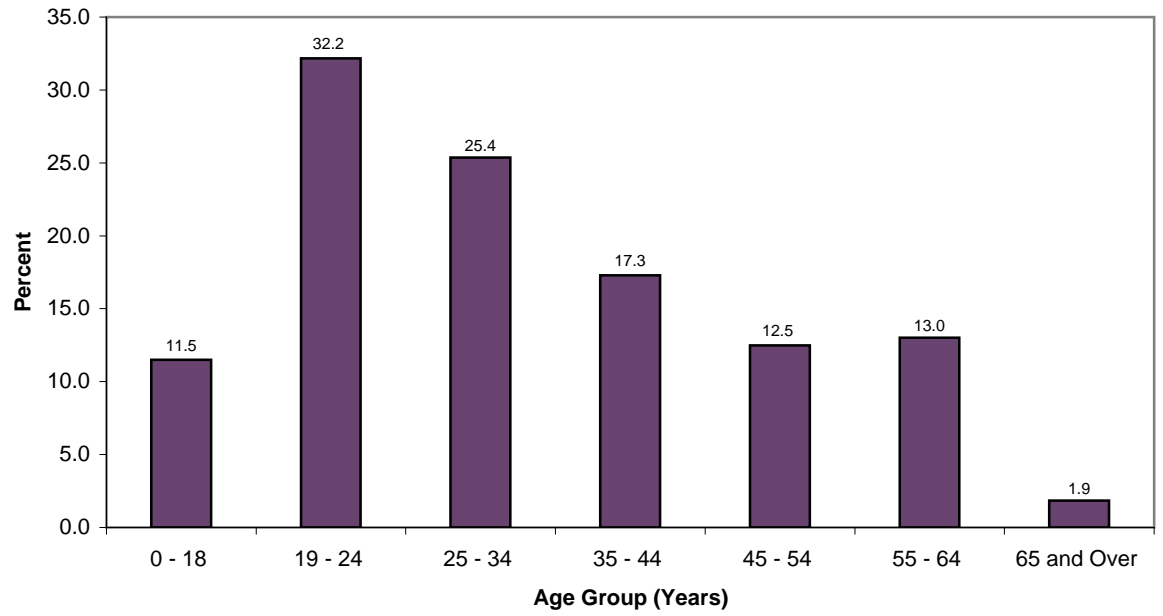
**Table 2. Uninsured by Age
New Jersey, 2002 - 2005**

Age Group (years)	2002		2003		2004		2005		2002-2004		2003-2005	
	No.	%	No.	%	No.	%	No.	%	No.	%	No.	%
0 - 18	227,609	10.1	264,129	11.5	269,256	11.7	258,536	11.3	760,994	11.1	791,921	11.5
19 - 24	179,386	29.3	192,652	30.5	215,727	35.6	196,052	30.4	587,765	31.8	604,431	32.2
25 - 34	272,143	23.4	259,729	24.3	255,170	24.1	314,181	27.7	787,042	24.0	829,080	25.4
35 - 44	191,708	13.9	187,686	13.7	292,798	20.8	236,268	17.4	672,192	16.1	716,752	17.3
45 - 54	182,529	14.5	154,407	11.7	169,435	13.0	170,313	12.8	506,371	13.1	494,155	12.5
55 - 64	127,605	15.7	132,834	15.0	103,567	11.1	115,287	13.0	364,006	13.9	351,688	13.0
65 and Over	15,614	1.4	9,375	0.9	15,790	1.5	33,142	3.1	40,779	1.3	58,307	1.9
Total	1,196,593	13.9	1,200,812	14.0	1,321,743	15.3	1,323,779	15.2	3,719,149	14.4	3,846,334	14.8

Note: Estimates based on weighted data

Source: Current Population Survey: Annual Demographic File, 2003-6, Bureau of the Census

Figure 2. Percent Uninsured by Age, New Jersey, (average) 2003-2005



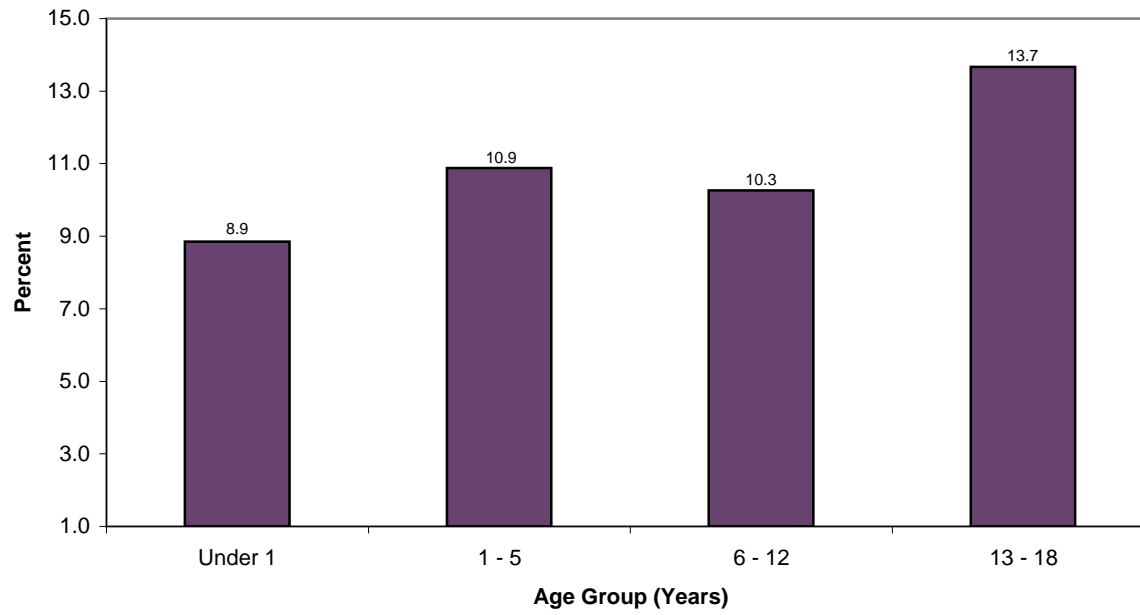
**Table 3. Health Insurance Coverage by Age, 2002-2005
New Jersey Residents Under Age 19**

Age Group (years)	2005	2005	2002-2004	2003-2005
	Total	Uninsured	Uninsured	Uninsured
			%	%
Under 1	104,398	6,330	6.1	8.9
1 - 5	585,828	56,369	9.6	10.9
6 - 12	792,831	80,740	10.2	10.3
13 - 18	808,974	115,096	14.2	13.7
Total	2,292,031	258,536	11.3	11.5

Note: Estimates based on weighted data

Source: Current Population Survey: Annual Demographic File, 2003-6, Bureau of the Census

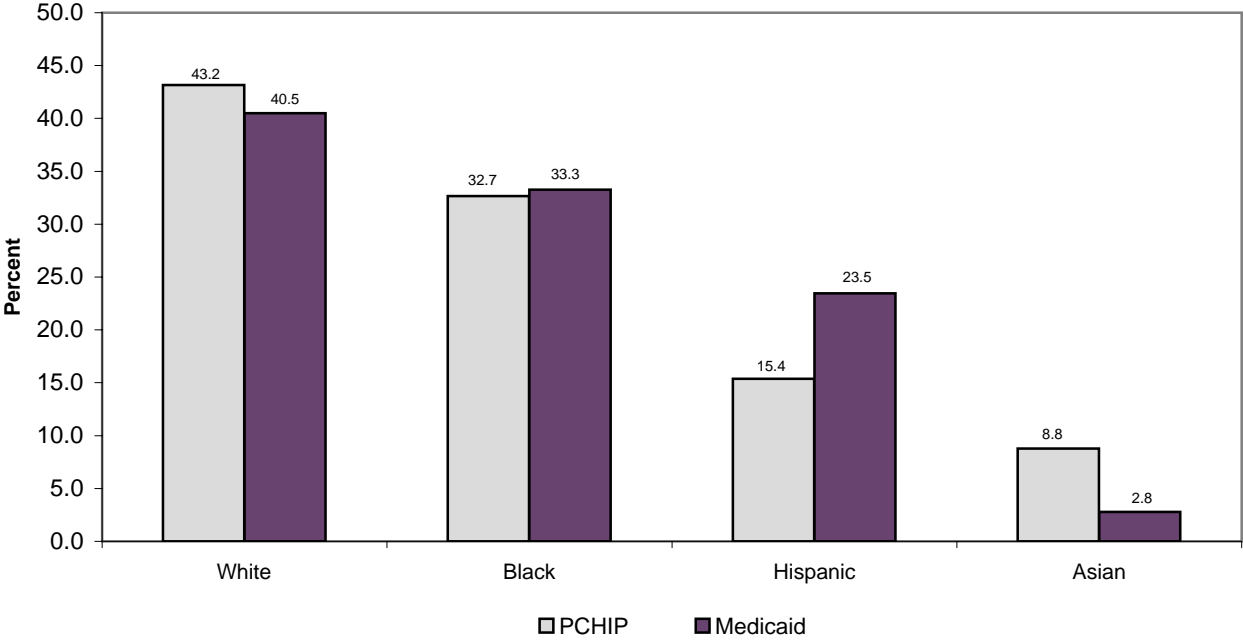
**Figure 3. Percent Uninsured by Age,
New Jersey Residents Under Age 19, (average) 2003-2005**



**Table 4. Characteristics of PCHIP and Medicaid Enrollees,
New Jersey, 2003-2005, Population Under Age 19**

	2005 PCHIP	Medicaid	2003-2005 PCHIP	Medicaid
Percent of age group (%)	1.9	13.7	2.0	13.1
Estimated Enrollment (N)	43152	293,191	137735	302,470
Age (%)				
<1	10.98	6.0	10.84	6.41
1-5	28.81	32.1	31.41	31.06
6-12	37.72	28.7	27.53	31.97
13-18	22.49	33.3	30.22	30.55
Race/Ethnicity (%)				
White	75.74	34.9	43.16	40.49
Black	14.73	31.8	32.67	33.27
Hispanic	0	29.7	15.37	23.47
Asian	9.53	3.4	8.79	2.77
Ratio of Income to FPL* (%)				
Below Poverty	39.48	39.3	32.48	42.07
<133% Poverty	14.3	13.7	10.71	15.54
133% and Over Poverty	46.22	47.0	56.81	42.39
<i>*Federal Poverty Level</i>				
<i>Note: Estimates based on weighted data</i>				
<i>Source: Current Population Survey: Annual Demographic File, 2003-6, Bureau of the Census</i>				

**Figure 4. Percent PCHIP and Medicaid Enrollees,
New Jersey Population Under Age 19, (average) 2003-2005**



**Table 5. Percent Uninsured by Ratio of Family Income to Federal Poverty Level (FPL)
New Jersey Population Under Age 65, 2001-2005**

Ratio of in to FPL	2001		2002		2003		2004		2005		2003-2005	
	n	Percent	n	Percent	n	Percent	n	Percent	n	Percent	n	Percent
<.50	141,350	53.1	105,555	35.6	187,204	50.1	136,785	41.3	107,494	34.8	431,483	42.6
.50-.74	77,587	38.1	73,725	47.8	53,735	31.3	52,591	28.8	37,559	32.0	143,885	30.5
.75-.99	64,794	41.9	48,994	24.3	46,679	31.3	58,971	35.2	80,778	42.5	186,429	36.8
1.00-1.24	89,926	38.7	61,492	32.9	72,961	32.5	96,613	45.0	55,842	26.4	225,416	34.6
1.25-1.49	80,932	31.1	62,535	27.4	95,345	41.5	65,155	33.1	69,844	41.4	230,344	38.7
1.50-1.74	77,390	29.3	68,349	32.3	67,832	33.4	116,731	45.6	75,260	30.7	259,824	36.9
1.75-1.99	80,843	26.7	54,384	21.8	64,048	21.8	71,796	30.8	94,854	32.5	230,697	28.2
2.00-2.49	69,730	16.1	131,497	30.1	124,387	26.4	160,444	29.3	155,115	30.5	439,947	28.8
2.50-2.99	69,847	15.5	102,975	24.4	103,130	22.4	106,574	20.1	125,710	24.6	335,415	22.4
3.00-3.49	73,727	15.7	94,170	15.3	55,416	10.7	85,364	16.6	61,389	13.4	202,169	13.6
3.50-3.99	44,490	9.0	72,652	14.7	45,716	8.8	79,998	15.0	52,312	10.0	178,025	11.3
4.00-4.49	50,081	10.8	45,489	10.5	29,370	6.1	32,541	6.7	58,636	15.1	120,547	8.9
4.50-4.99	42,326	9.9	43,452	10.8	16,826	4.9	46,821	9.9	55,307	13.0	118,955	9.6
5.00 and o	137,368	4.8	215,711	6.9	228,787	7.3	195,569	6.6	260,536	7.9	684,892	7.3
Total	1,100,391	15.1	1,180,980	15.8	1,191,436	15.8	1,305,953	17.2	1,290,637	16.9	3,788,027	16.6

Note: Estimates based on weighted data

Source: Current Population Survey: Annual Demographic File, 2002-6, Bureau of the Census

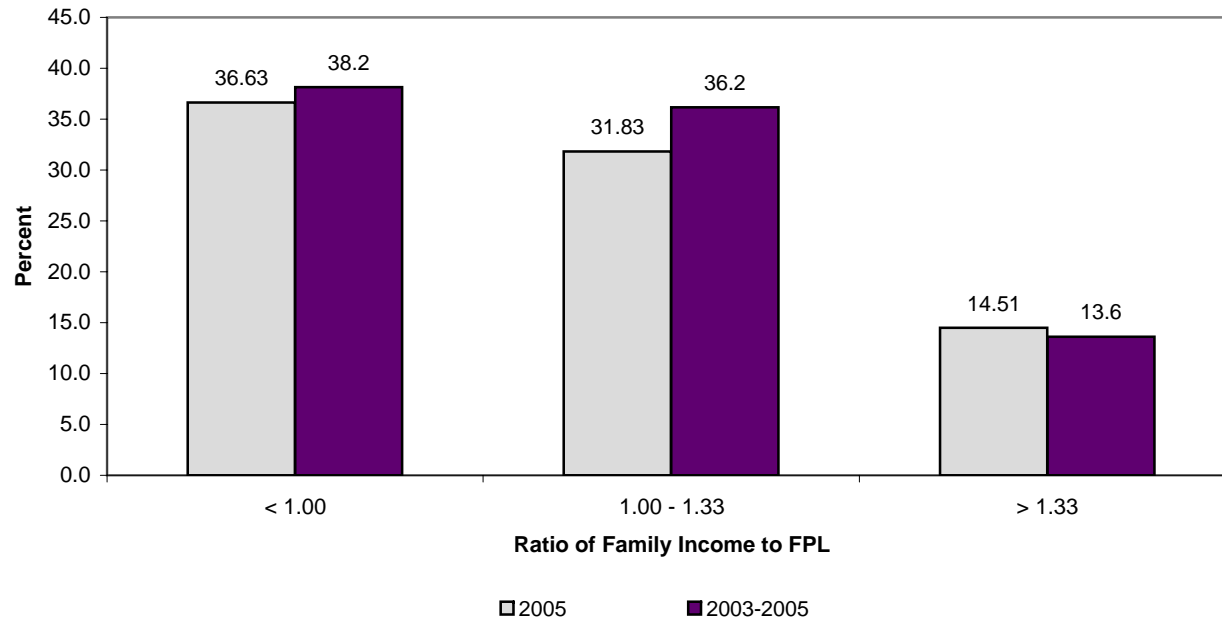
**Table 6. Percent Uninsured by Ratio of Family Income to Federal Poverty Level (FPL)
New Jersey Population Under Age 65, 2000-2003**

Ratio of Family Income to FPL	2001		2002		2003		2004		2005		2002-2004		2003-2005	
	No.	%	No.	%	No.	%	No.	%	No.	%	No.	%	No.	%
< 1.00	283,731	45.4	228,274	35.0	287,618	41.4	248,347	36.4	225,832	36.63	254,746	37.6	253,932	38.2
1.00 - 1.33	119,452	35.9	84,593	32.3	105,015	35.5	115,835	41.1	80,680	31.83	101,814	36.3	100,510	36.2
> 1.33	697,209	11.1	868,112	13.2	798,803	12.2	941,772	14.2	984,125	14.51	869,562	13.2	908,233	13.6
Total	1,100,391	15.1	1,180,980	15.8	1,191,436	15.8	1,305,953	17.2	1,290,637	16.86	1,226,123	16.2	1,262,675	16.6

Note: Estimates based on weighted data

Source: Current Population Survey: Annual Demographic File, 2002-6, Bureau of the Census

**Figure 6. Percent Uninsured by Ratio of Family Income to Federal Poverty Level (FPL),
New Jersey Residents Under Age 65, 2003-2005**



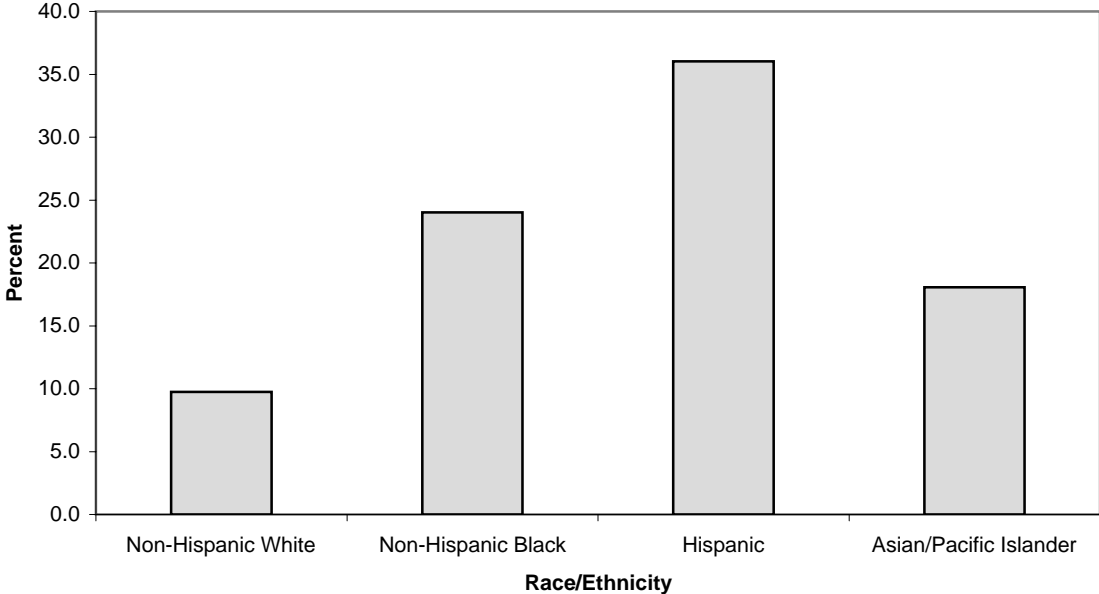
**Table 7. Percent Uninsured by Race and Ethnicity, 2003-2005
New Jersey Residents Under Age 65**

Race/Ethnicity	2002		2003		2004		2005		2003-2005	
	No.	%	No.	%	No.	%	No.	%	No.	%
Non-Hispanic White	541,231	11.3	507,375	10.5	450,268	9.5	422,817	9.2	460,153	9.7
Non-Hispanic Black	216,771	20.7	236,723	22.4	293,286	27.2	226,825	22.3	252,278	24.0
Hispanic	343,370	32.2	363,194	33.1	466,665	38.3	522,882	36.4	450,914	36.0
Asian/Pacific Islander	69,438	14.5	84,144	16.1	85,977	17.2	105,603	20.4	91,908	18.1
Total	1,176,102	15.9	1,191,436	15.8	1,297,210	17.2	1,279,154	16.9	1,255,933	16.6

Note: Estimates based on weighted data

Source: Current Population Survey: Annual Demographic File, 2003-6, Bureau of the Census

**Figure 7. Percent Uninsured by Race and Ethnicity,
New Jersey Residents Under Age 65, (average) 2003-2005**



**Table 8. Health Insurance Coverage Source, by Race, Ethnicity, and Nativity,
New Jersey Residents Under Age 65, 2005**

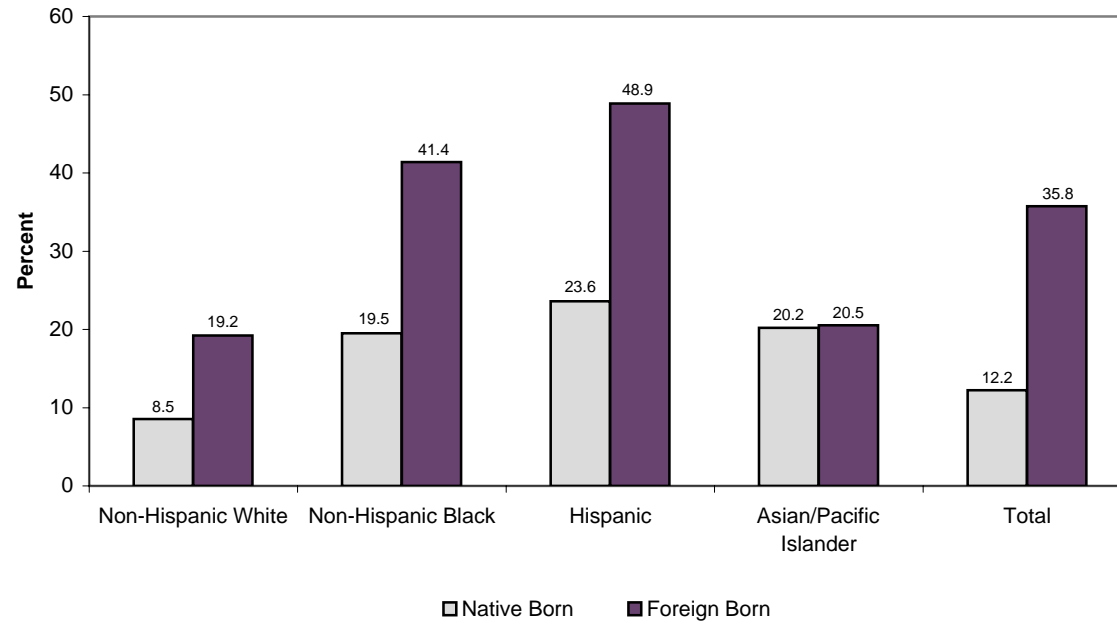
	Employment Related Group		Nongroup/ Other*		Medicaid		Uninsured		Total	
	No.	%	No.	%	No.	%	No.	%		
Non-Hispanic White										
Native Born	3,507,581	81.4	278,249	6.5	153,704	3.6	367,607	8.5	4,307,142	
Foreign Born	204,277	71.2	17,367	6.1	10,162	3.5	55,210	19.2	287,015	
Non-Hispanic Black										
Native Born	527,050	59.6	50,300	5.7	134,900	15.2	172,744	19.5	884,995	
Foreign Born	59,950	45.9	4,877	3.7	11,713	9.0	54,081	41.4	130,622	
Hispanic										
Native Born	366,590	51.5	23,936	3.4	153,601	21.6	167,866	23.6	711,994	
Foreign Born	294,824	40.6	25,231	3.5	51,489	7.1	355,017	48.9	726,560	
Asian/Pacific Islander										
Native Born	125,067	74.2	5,364	3.2	4,113	2.4	34,035	20.2	168,578	
Foreign Born	257,948	74.0	16,637	4.8	2,647	0.8	71,568	20.5	348,801	
Total										
Native Born	4,536,160	74.6	357,850	5.9	447,723	7.4	743,279	12.2	6,085,012	
Foreign Born	822,464	54.9	64,112	4.3	76,011	5.1	535,876	35.8	1,498,463	

* For Persons under 65, Other insurance includes Champus and Medicare.

Note: Estimates based on weighted data

Source: Current Population Survey: Annual Demographic File, 2006, Bureau of the Census

**Figure 8. Percent Uninsured, by Race, Ethnicity, and Nativity,
New Jersey Residents Under Age 65, 2005**



**Table 9. Percent Uninsured by Firm Size, New Jersey
2003-2005 and 2005**

Firm Size (no. of employees)	Uninsured 2003-2005			Uninsured 2005		
	Total	Number	Percent	Total	Number	Percent
Self-employed	1146708	214678	18.72	374157	70309	18.79
< 10 employees	1688948	553363	32.76	613754	200514	32.67
10-24 employees	1345937	320598	23.8	470486	132777	28.22
25-99 employees	1805744	318793	17.65	638737	126578	19.82
100-499 employees	1869659	210570	11.92	636221	63143	9.92
500-999 employees	810001	86762	10.7	240039	19032	7.93
1,000+ employees	5186916	531893	10.3	1815137	197737	10.89

Note: Estimates based on weighted data

Source: Current Population Survey: Annual Demographic File, 2004-2006, Bureau of the Census

Figure 9. Percent Uninsured by Firm Size, New Jersey, (average) 2003-2005

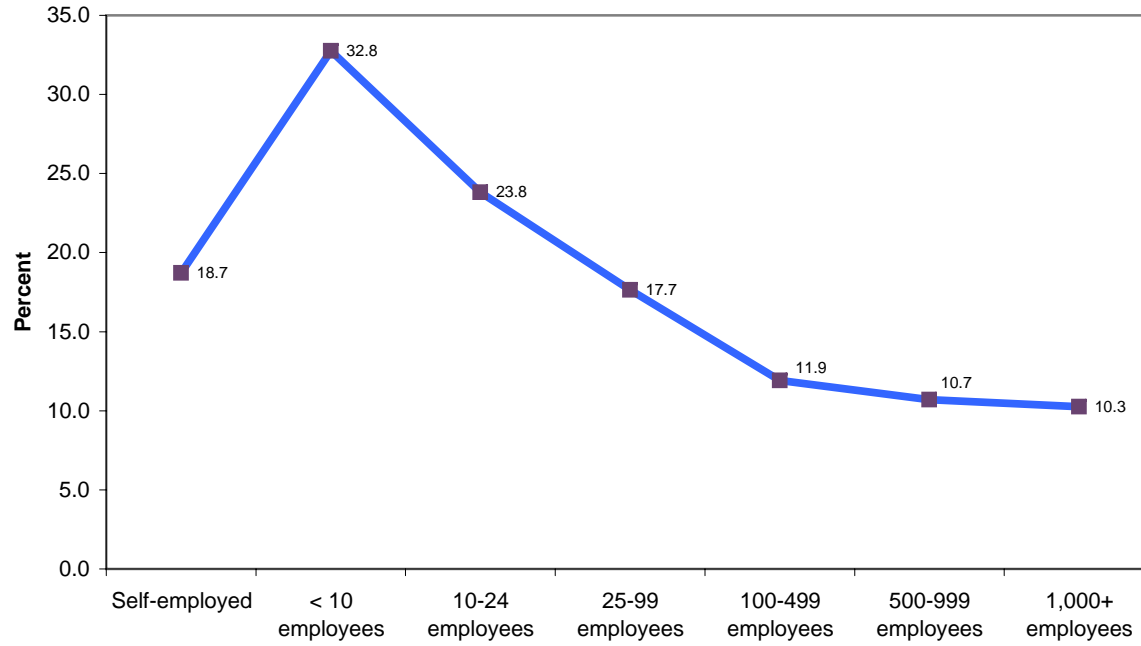


Table 10. Percent uninsured by child and parents' nativity and citizenship, New Jersey residents under 19 years, 2003-5

		2003-5	2004-5	2005
Child and parent are native born	n	429,951	275,926	124,088
	%	8.4	8.1	7.5
Child native born, parent FB citizen	n	81,978	53,780	25,535
	%	11.8	11.7	11.4
Child native born, parent FB non-citizen	n	130,039	91,967	54,351
	%	20.7	20.8	21.4
Child and parent are FB citizens	n	7,895	6,611	3,407
	%	15.6	19.1	25.2
Child is FB non-citizen, parent is FB citizen	n	15,950	11,843	3,100
	%	34.2	31.4	15.8
Child and parent are FB non-citizens	n	119,729	82,721	45,656
	%	42.0	43.8	46.6

Source: Current Population Survey: Annual Demographic File, 2004-2006, Bureau of the Census
 Estimates based on weighted data.

Table 11. Percent uninsured by ratio of income to FPL, New Jersey residents aged 19-64 years, 2003-2005

Year		<1.00	1.00-1.99	2.00+
2003	n	192,227	224,114	568,211
	%	47.3%	38.2%	13.3%
	Total	406,455	586,404	4,277,030
2004	n	197,916	270,571	568,211
	%	46.3%	44.2%	13.3%
	Total	427,317	611,462	4,277,030
2005	n	154,702	227,625	649,776
	%	44.1%	40.4%	14.6%
	Total	351,125	563,925	4,446,543
2003-2005	n	544,845	722,310	1,786,198
	%	46.0%	41.0%	13.7%
	Total	1,184,897	1,761,791	13,000,603

Note: Estimates based on weighted data

Source: Current Population Survey: Annual Demographic File, 2004-6, Bureau of the Census

Table 12. Percent uninsured by nativity and citizenship, New Jersey residents aged 19-64 years, 2003-5

Year	Native-born	Foreign-born	
		Citizen	Non-Citizen
2003 n	534,057	97,566	295,684
%	13.3	18.2	41.5
Total	4,021,172	536,548	713,036
2004 n	580,780	94,192	361,725
%	14.4	17.9	47.1
Total	4,021,478	525,855	768,477
2005 n	549,723	99,071	383,307
%	13.7	18.8	46.2
Total	4,005,415	527,237	828,939

Note: Estimates based on weighted data

Source: Current Population Survey: Annual Demographic File, 2004-6, Bureau of the Census

Table 13. Percent uninsured by ratio of income to FPL, New Jersey residents aged <19 years, 2005

Age		<1.99	2.00-3.49	3.49+
<1	n	4,679	1,651	0
	%	12.8%	7.2%	0.0%
	Total	36,591	22,901	44,906
1-5	n	43,073	5,014	5,298
	%	22.5%	4.6%	4.8%
	Total	191,395	108,210	110,737
6-12	n	43,064	18,057	8,969
	%	21.5%	15.1%	4.1%
	Total	200,306	119,786	218,559
13-18	n	48,491	38,440	26,276
	%	25.5%	27.8%	12.4%
	Total	190,122	138,384	211,738
<19	n	139,307	63,162	40,544
	%	22.5%	16.2%	6.9%
	Total	618,413	389,281	585,940

Note: Estimates based on weighted data

Source: Current Population Survey: Annual Demographic File, 2006, Bureau of the Census

Table 14. Unweighted Frequencies				
Age	2002	2003	2004	2005
< 18 years	1,736	1,747	1515	1358
19 - 64 years	3,337	3,301	2855	2620
65+ years	565	510	466	439
Total	5,638	5,558	4,836	4,417
Race/Ethnicity				
Non-Hispanic White	3,574	3,413	3012	2526
Non-Hispanic Black	696	747	577	554
Hispanic	949	963	878	982
American Indian	17	12	13	17
Asian/Pacific Islander	340	375	313	293
Non-Hispanic Other	13	7	43	45
Total	5,589	5,517	4,836	4,417

Source: Current Population Survey: Annual Demographic File, 2006, Bureau of the Census