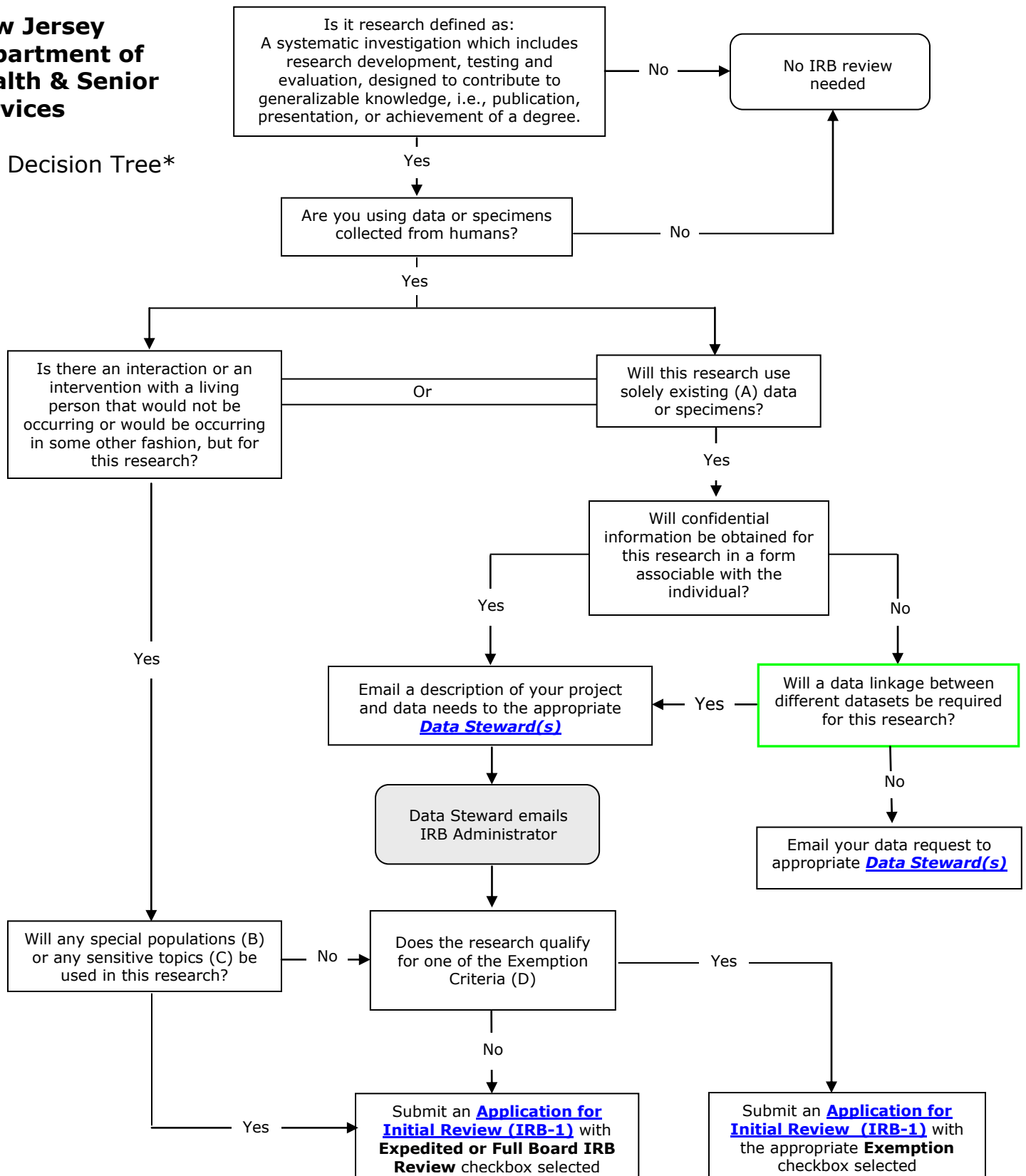


**New Jersey
Department of
Health & Senior
Services**

IRB Decision Tree*



(A) Existing - Collected (i.e., on the shelf) prior to the research for a purpose other than the proposed research, includes data or specimens collected in research and non-research activities.

(B) Special Populations - Minors, incarcerated individuals or institutionalized mentally disabled persons (individuals residing as patients in an institution who are mentally ill or retarded; emotionally disturbed; psychotic; or senile). [View detailed description of special populations.](#)

(C) Sensitive Topics - Any topic that has the potential to make the subject uncomfortable, e.g., sexual behavior, racial biases, illegal activities, etc.

(D) Exemption Criteria - (1) Normal educational practices and settings; (2) Anonymous educational tests, surveys, interviews, or observations; (3) Identifiable subjects in special circumstances; (4) Collection or study of existing data; (5) Public benefit or service program; or (6) Taste and food evaluation and acceptance studies. [View detailed description of the Exemption Criteria.](#)

*Adapted from Princeton University, IRB Decision Flow Chart (2010)